



Designed to make a difference



5 YEAR
Parts and Labour
Warranty



**GLEN DIMPLEX
BOILERS**

Dimplex Gas boilers

A new range of advanced design boilers giving powerful, yet efficient heating and hot water throughout the home. With easy access for service and maintenance and a five year parts and labour warranty on all models, the Dimplex range ensures complete peace of mind for both the installer and end user.

In addition, the sleek casing gives the boiler a smart and modern appearance, complementing either a traditional or contemporary environment.

It all boils down to...

The right boiler

- A range of 7 gas boilers ideally suited to any of your home requirements
- Up to 38kw output to satisfy the largest family's hot water needs
- Compact and lightweight – can even fit into a kitchen cupboard!
- Simple with quick installation and maintenance – 2 screw access, pre plumbing jig, wall mounting template, filling loop and quick-fit guide.

The right performance

- SEDBUK A/SAP 2009 maximum efficiency rating
- Fully modulating output – adjusts energy usage in line with heating and hot water demands.
- Environmentally friendly – ultra low nox emissions (Class 5 – the best!)
- Comfort pre-heat setting – predicts usage of hot water and adapts to the users needs by preheating the boiler.

The right support

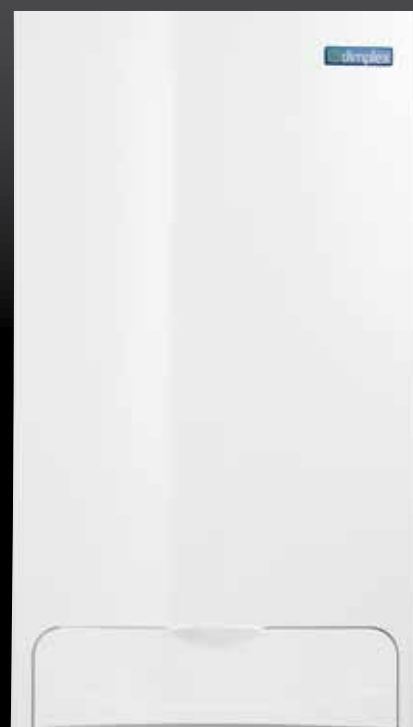
- 5 year parts and labour warranty
- Award winning Customer Care and Spare Parts Centre
- Dedicated service and technical helpline: 0844 371 1111
Intl: +44 (0)151 426 7011
- Nationwide network of service engineers

The right brand

- Dimplex – the leading brand name in electric space and water heating
- Glen Dimplex Group – one of the worlds largest electrical and gas heating and appliance businesses
- 35 years of manufacturing and boiler experience

The right price

- A premium gas boiler – for less!



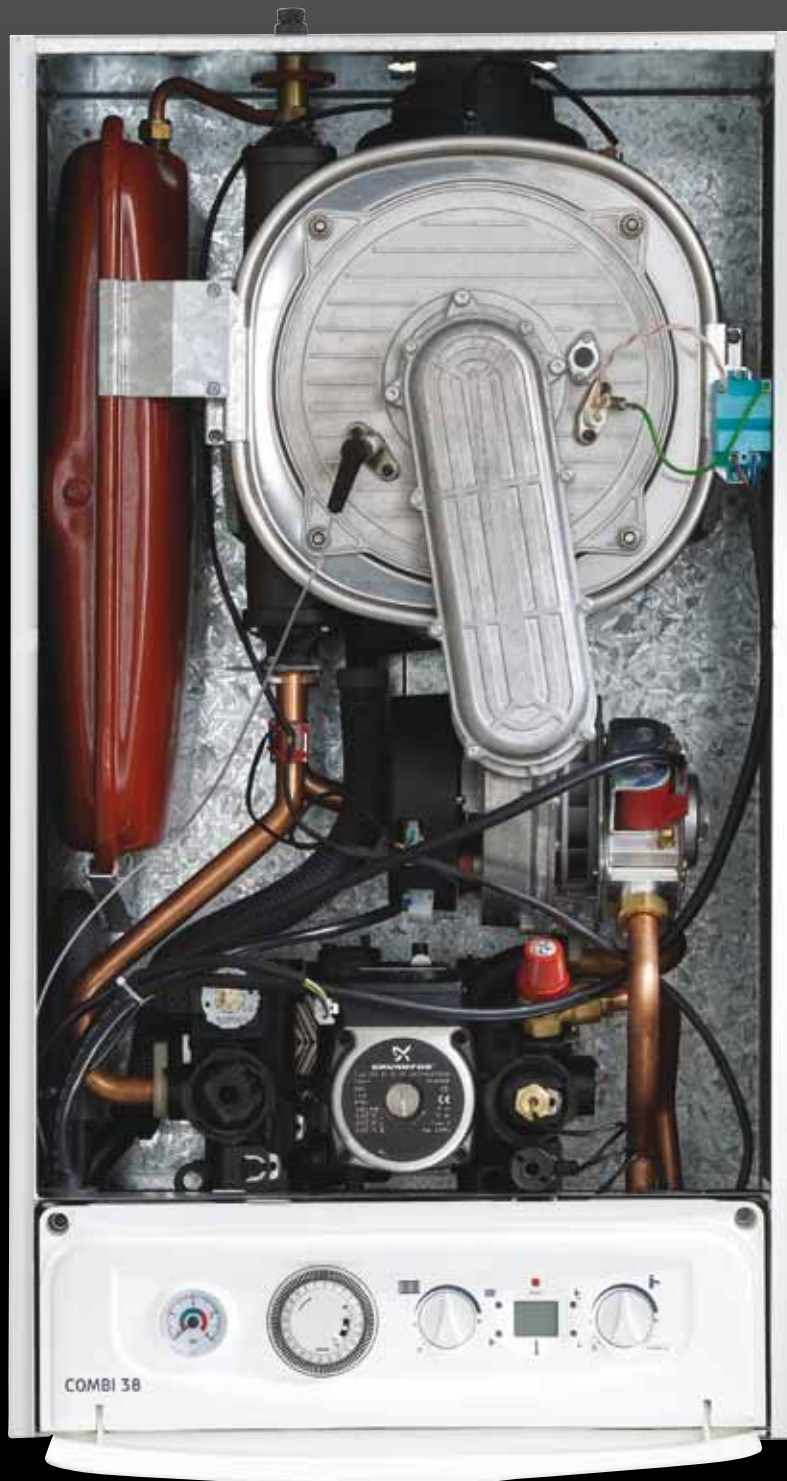
Dimplex – technology you can rely on, a brand name you can trust

Why choose Dimplex Gas boilers?

- 5 year parts and labour warranty
- Year round service and technical support
- Simple and quick installation
- Brand leading components
- Versatile flueing options
- British made

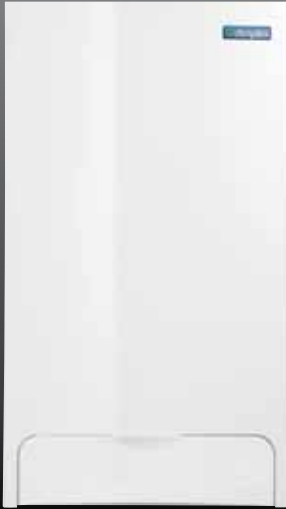


- All components accessible from front
- Giannoni iso-thermic, stainless steel heat exchanger
- Ultra low nox burner
- Grundfos hydrobloc, pump and controls
- Gas/air control and pre-mix fan
- Well proven, reliable PCB
- Twin LCD giving clear information for User and Service Engineer on boiler status



- Only 2 screws to access
- Telescopic flue can be fitted horizontally
- Wall mounting template
- Quick fit guide
- Pre plumbing jig
- Filling loop included
- Frost protection
- Whisper quiet operation

Dimplex Combi 24kW, 30kW and 38kW

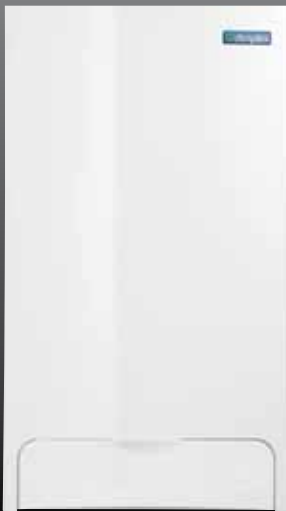


The Dimplex Combination boiler is a compact central heating solution which is ideally suited to homes that require hot water on demand but don't want header or storage tanks with the added benefit of all-round energy efficiency.



- Choice of 3 Outputs
- 24kW, 30kW and 38kW Options available
- Excellent DHW Flow rates
 - 24kW 9.8L, 30kW 12.3L, 38kW 15.6L
- Wide CH modulation range
 - 24kW 6.0kW up to 18.0kW
 - 30kW 7.4kW up to 23.3kW
 - 38kW 9.8kW up to 30.0kW
- SEDBUK A Rated for maximum efficiency
- Low Nox emissions (Nox Class 5) so kinder to the environment
- Stainless Steel coil Heat Exchanger giving excellent corrosion resistance
- 24 HE Combi 444440444
- 30 HE Combi 444440445
- 38 HE Combi 444440446

Dimplex System 18kW and 30kW

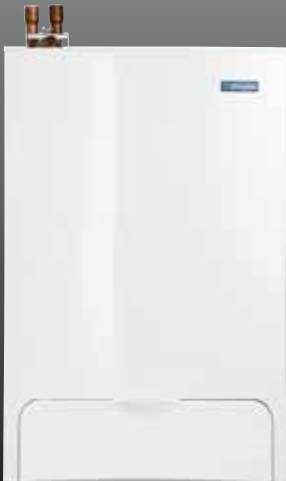


The Dimplex System boiler provides all the benefits of a sealed central heating system, which means high performance and efficiency but is also superbly designed for those that want a premium design and removes the need for a loft header tank.



- Choice of two outputs
- 18kW and 30kW outputs available
- Compact Dimensions 800x446x335
- Wide CH modulation range
 - 18kW - 5.8kW up to 18.0kW
 - 30kW - 8.1kW up to 29.8kW
- SEDBUK A Rated for maximum efficiency
- Low Nox emissions (Nox Class 5) so kinder to the environment
- Stainless Steel coil Heat Exchanger giving excellent corrosion resistance
- 18 HE System 444440447
- 30 HE System 444440448

Dimplex Open Vent 18kW and 32kW



This boiler is no ordinary replacement for the traditional cast iron, wall hung or floor standing boilers. With an efficient and contemporary design, homeowners can reap the benefits of environmentally friendly boiler technology with the minimum disruption to the existing heating system.



- 18kW and 32kW options available
- Compact design 18kW will fit into standard kitchen cupboard
 - 18kW 585x376x275
 - 32kW 585x376x344
- Lightweight
 - 18kW = 23kg
 - 32kW = 26kg lift weight
- Wide CH modulation range
 - 18kW - 6.0kW up to 18.1kW
 - 32kW - 9.6kW up to 30.7kW
- SEDBUK A Rated for maximum efficiency
- Low Nox emissions (Nox Class 5) so kinder to the environment
- Stainless Steel coil Heat Exchanger giving excellent corrosion resistance
- 18 HE OV 444440449 • 32 HE OV 444440450

One of the smallest Open Vent on the market. Small enough to fit inside a kitchen cupboard.

Condensing flue options

Dimplex Condensing Boilers can be installed in a wide range of domestic applications. All kits are suitable for use with the Dimplex Combi, System and Open Vent boilers.

Dimplex FLUE KITS


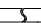





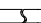















SUITABLE FOR HIGH EFFICIENCY CONDENSING APPLIANCES ONLY

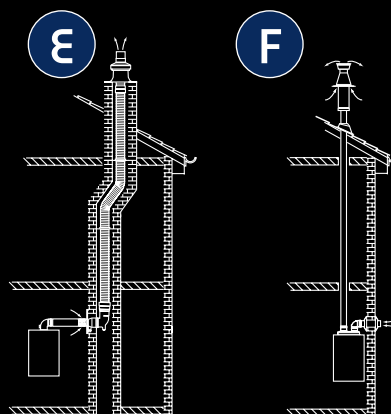
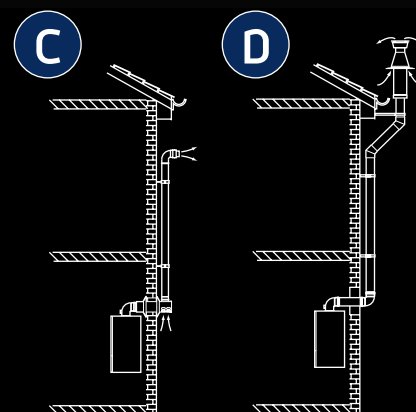
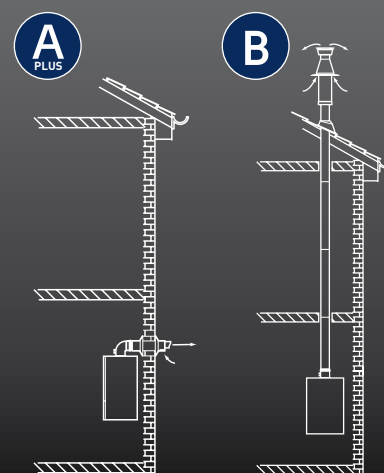
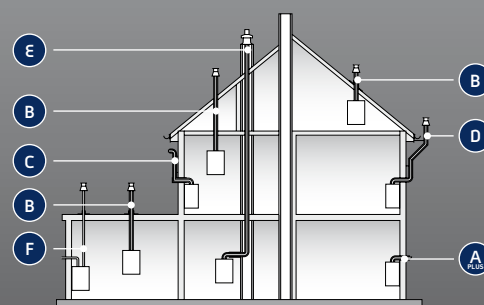
	Kit Ref	Part No
Telescopic Horizontal Flue Kit (C13) 93° flanged elbow, 430mm to 615mm telescopic terminal assembly, wall seals Replaces (956083)	A	444449664
Standard Vertical Flue Kit (C33) Vertical turret socket, vertical flue terminal, bracket (no extension ducts included – see 956092/3 below)	B	444449687
Raised External Flue Outlet Kit (C13) 93° flanged elbow, 100mm concentric duct, wall seals, 80mm vertical extension (1000mm), bracket, terminal elbow	C	444449685
External Vertical Flue Kit (C33) 93° flanged elbow, 100mm concentric duct, wall seals, 93° in line elbow, 1000mm extension duct, support brackets, 2 x 45° elbows and connecting duct, vertical flue terminal	D	444449684
Chimney Flue Liner Kit (B23) 93° flanged elbow, vertical turret socket, flue duct, wall access plate, 93° elbow and metal support bracket, chimney centralising bracket (for flexi tube), chimney top connector, terminal	E	444449686
Flexi tube, 10 metre length, for Kit E		444449667
Flexi tube, 20 metre length, for Kit E		444449666
Flexi tube, 30 metre length, for Kit E		444449665
Split Pipe Vertical Flue Kit (C53) Twin 80mm adaptor, 2 x extension ducts, roof terminal, pitch roof flashing, air intake and wall seals	F	444449688

Please note these kits form a basic flueing configuration and can be extended by using the appropriate accessories listed below.

Dimplex FLUE ACCESSORIES

SUITABLE FOR HIGH EFFICIENCY CONDENSING APPLIANCES ONLY

	Usable with Kit Ref	Part No
100/60 concentric duct accessories	A, B, D	
 Flue extension duct – 500mm		444449678
 Flue extension duct – 1000mm (incl. 1 x support bracket)		444449677
 93° extension elbow		444449679
 45° extension elbow		444449680
 Support bracket – 100mm		444449690
 Long support bracket – 100mm (200mm length)	D	444449780
80/60 insulated duct accessories	C	
 Flue extension duct – 1000mm (incl. support bracket)		444449674
 Flue extension duct – 2000mm (incl. 2 x support brackets)		444449673
 90° extension elbow		444449675
 45° extension elbow (pair)		444449676
 Support bracket – 80mm		444449691
80mm single duct accessories	F	
 Flue extension duct – 1000mm (incl. support bracket)		444449670
 Flue extension duct – 2000mm (incl. 2 x support brackets)		444449669
 92° extension elbow		444449671
 45° extension elbow (pair)		444449672
 Support bracket – 80mm		444449691
General		
 Flat roof flashing kit	B, F	444449692
 Pitched roof flashing kit	B	444449681
 93° flanged elbow	A, B, C, D, E	444449683
 Vertical turret socket	A, B, C, D, E	444449682
 Set of 100mm duct seals for extension	D	444449781
 Plume diverter kit	A	444449668
 Terminal guard	A	444449689



TECHNICAL SPECIFICATIONS

	Dimplex Open Vent		Dimplex Combi band A			Dimplex System	
	18HE	32HE	24HE	30HE	38HE	18HE	30HE
2.1 Central heating							
Central Heating input (kW) Max Rate Net	18.4	31.4	18.4	23.9	30.6	18.4	30.4
Central Heating input (kW) Max Rate Gross	20.4	34.9	20.4	26.5	34	20.4	33.7
Minimum heat output@ 80/60°C (kW)	6	9.6	6	7.4	9.8	6	8.1
Maximum heat output@ 80/60°C (kW)	18.1	30.7	18	23.1	30	18.1	29.8
Maximum heat output@ 50/30°C (kW)	19.7	33.6	19.5	25.4	32.1	19.7	32.5
Minimum working pressure (bar)	0.1	0.1	0.5	0.5	0.5	0.5	0.5
Maximum working pressure (bar)	3	3	2.5	2.5	2.5	2.5	2.5
2.2 Domestic hot water							
Maximum output (kW)	N/A	N/A	24	30	38	N/A	N/A
Minimum output (kW)	N/A	N/A	6	7.4	9.8	N/A	N/A
Flow rate at 35°C rise (l/min)	N/A	N/A	9.8	12.3	15.6	N/A	N/A
Maximum inlet pressure (bar)	N/A	N/A	10	10	10	N/A	N/A
Minimum inlet working pressure (bar)	N/A	N/A	0.5	0.5	0.5	N/A	N/A
Minimum flow rate (l/min)	N/A	N/A	2	2	2.5	N/A	N/A
2.3 Gas pressures (mbar)							
Inlet pressure G20	20	20	20	20	20	20	20
Gas Rate Maximum - m ³ /h (DHW)	1.94	3.32	1.94	2.52	3.24	1.94	4
2.4 Expansion vessel							
Capacity (litres)	N/A	N/A	8	8	8	8	8
Maximum system volume (litres)	N/A	N/A	84	84	84	84	84
Pre-charge pressure (bar)	N/A	N/A	1	1	1	1	1
2.5 Dimensions (mm)							
Height	585	585	800	800	800	800	800
Width	376	376	446	446	446	446	446
Depth	275	344	335	335	335	335	335
Dry weight (Kg)	23	26	33.6	36.6	39.6	32	35
2.6 Clearances (mm)							
Sides	5	5	5	5	5	5	5
Top - Above flue elbow	25	25	25	25	25	25	25
Bottom	150	150	150	150	150	150	150
Front	5	5	5	5	5	5	5
2.7 Connections (mm)							
Flow & return	22	28	22	22	22	22	22
Hot & cold water connections	N/A	N/A	15	15	15	N/A	N/A
Gas	15	22	22	22	22	22	22
Pressure relief safety valve	N/A	N/A	15	15	15	N/A	N/A
Condensate connection	21 - 23	21 - 23	21 - 23	21 - 23	21 - 23	21 - 23	21 - 23
2.8 Electrical							
Voltage	230V/~50Hz	230V/~50Hz	230V/~50Hz	230V/~50Hz	230V/~50Hz	230V/~50Hz	230V/~50Hz
Power consumption (Watts)	30	50	125	140	146	100	125
Internal fuse (Amps)	T4H 4A 250V	T4H 4A 250V	T4H 4A 250V	T4H 4A 250V	T4H 4A 250V	T4H 4A 250V	T4H 4A 250V
External fuse (Amps)	3	3	3	3	3	3	3
2.9 Flue details (concentric)							
Max horizontal flue length (60/100mm) - Metres	10	10	10	10	10	10	10
Max vertical flue length (60/100mm) - Metres	12	12	12	12	12	12	12
2.9 Flue details (twin pipe 80mm + 80mm)							
NOTE: The twin flue system MUST be calculated according to the Dimplex flue guide							
Mini vertical flue length - Metres	0.6 m	0.6 m	0.6 m	0.6 m	0.6 m	0.6 m	0.6 m
Max vertical + horizontal flue length - Metres	30 m	30 m	30 m	30 m	30 m	30 m	30 m
2.10 Efficiency							
SEDBUK Band	Band A	Band A	Band A	Band A	Band A	Band A	Band A
Combustion Emissions							
NOx Class	5	5	5	5	5	5	5
Approx CO ₂ @ Maximum input (NG)	9%	9%	9%	9%	9%	9%	9%
Approx CO ₂ @ Maximum input (LPG)	9%	9%	9%	9%	9%	9%	9%



**GLEN DIMPLEX
BOILERS**

Glen Dimplex Boilers, Stoney Lane, Prescott, Merseyside L35 2XW
For all telephone enquiries call: 0844 371 1111 Int: +44 (0)151 426 7011

Email: info@glendimplexboilers.com
Website: www.glendimplexboilers.com

Dimpco Ltd, Airport Road, Cloghran, Co Dublin
For all telephone enquiries call: +353 1 842 8222

Tech Support: 1890 277 277
Email: sales@dimpco.ie service@dimpco.ie
Website: www.dimpco.ie

Part of the multi national Glen Dimplex Group - one of the world's largest electrical and gas heating appliance businesses - Glen Dimplex Boilers boasts 35 years of manufacturing and gas boiler experience.

Whether it's a combi, system or an open vent boiler, Dimplex gas boilers are a fast growing choice amongst installers and homeowners, who seek a boiler that offers more for less with the support of a market leading five year parts and labour warranty. As well as a trusted brand name, all Dimplex gas boilers are British made and feature brand-leading components with a versatile range of flueing options and year round technical service and support. A range of unvented cylinders for powerful, mains-pressure hot water and a solar thermal hot water package is also available.

Glen Dimplex Boilers are continuously improving their products and may therefore change specifications without prior notice.
The statutory rights of the consumer are not affected.
htd/04/11